

# Selected results of the Romanian graduate survey

René Kooij, INCHER-Kassel

Presentation at the Workshop “University Graduates and Labor Market Tracer Study – Considerations on the First Results” of the Project “National Study of Monitoring the Higher Education Graduates’ Insertion into the Labor Market (NAMO)”

National Institute of Statistics, Bucharest (Romania)

21-22 November 2011

UNIKASSEL  
VERSITÄT



INCHER-KASSEL  
Internationales Zentrum  
für Hochschulforschung Kassel

- Graduates 2009: 24047, 2005: 10440
- Social and political sciences
  - 2005: 1138
  - 2009: 4492
- Economics
  - 2005: 2447
  - 2009: 5894
- Engineering
  - 2005: 2918
  - 2009: 7794

# Selected results



## 4

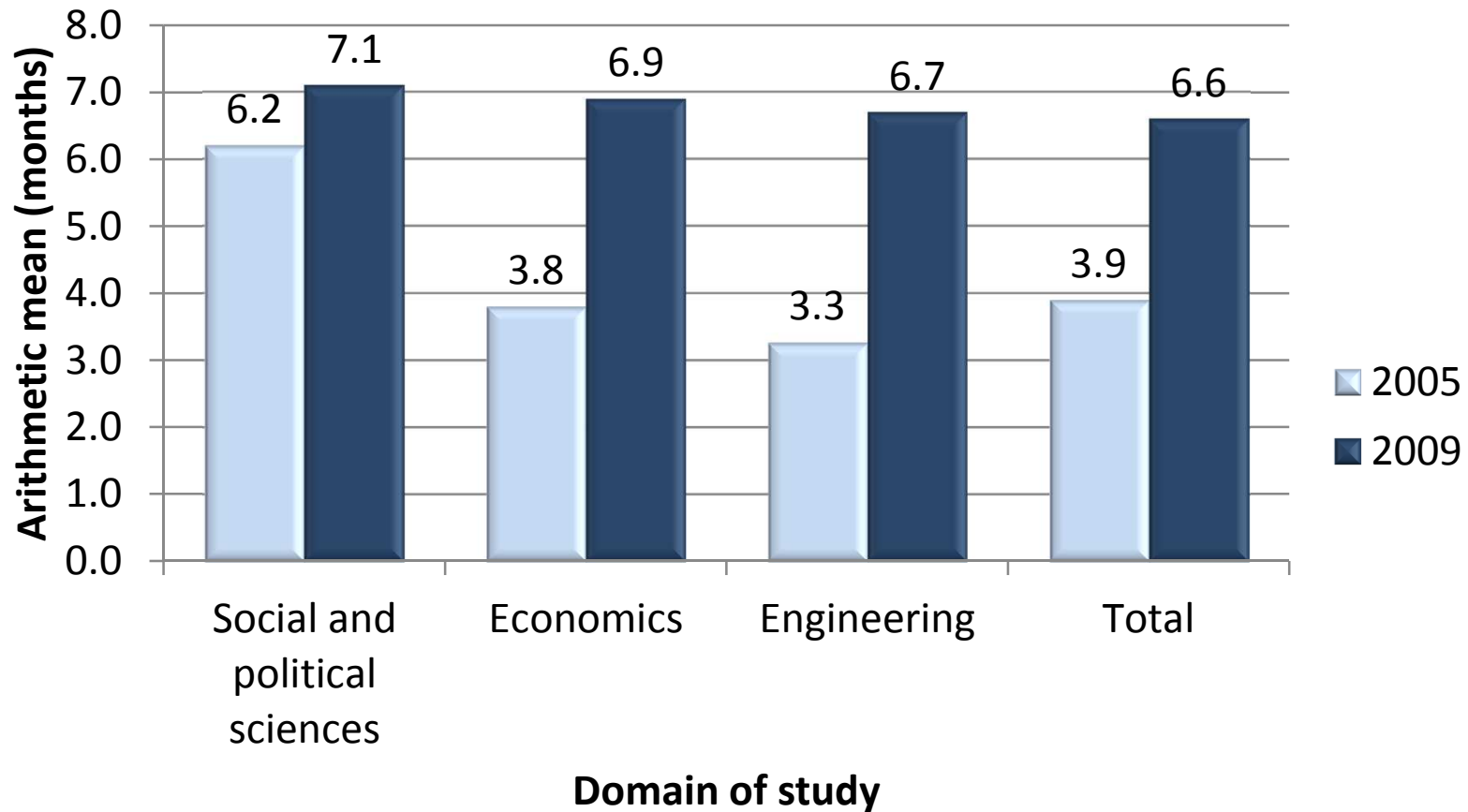
# Employment conditions and use of skills - Indicators

1. Duration of job search
2. Full time employment
3. Unlimited term contract
4. Horizontal match – Use of knowledge and skills
5. Vertical match – appropriate level of education for employment

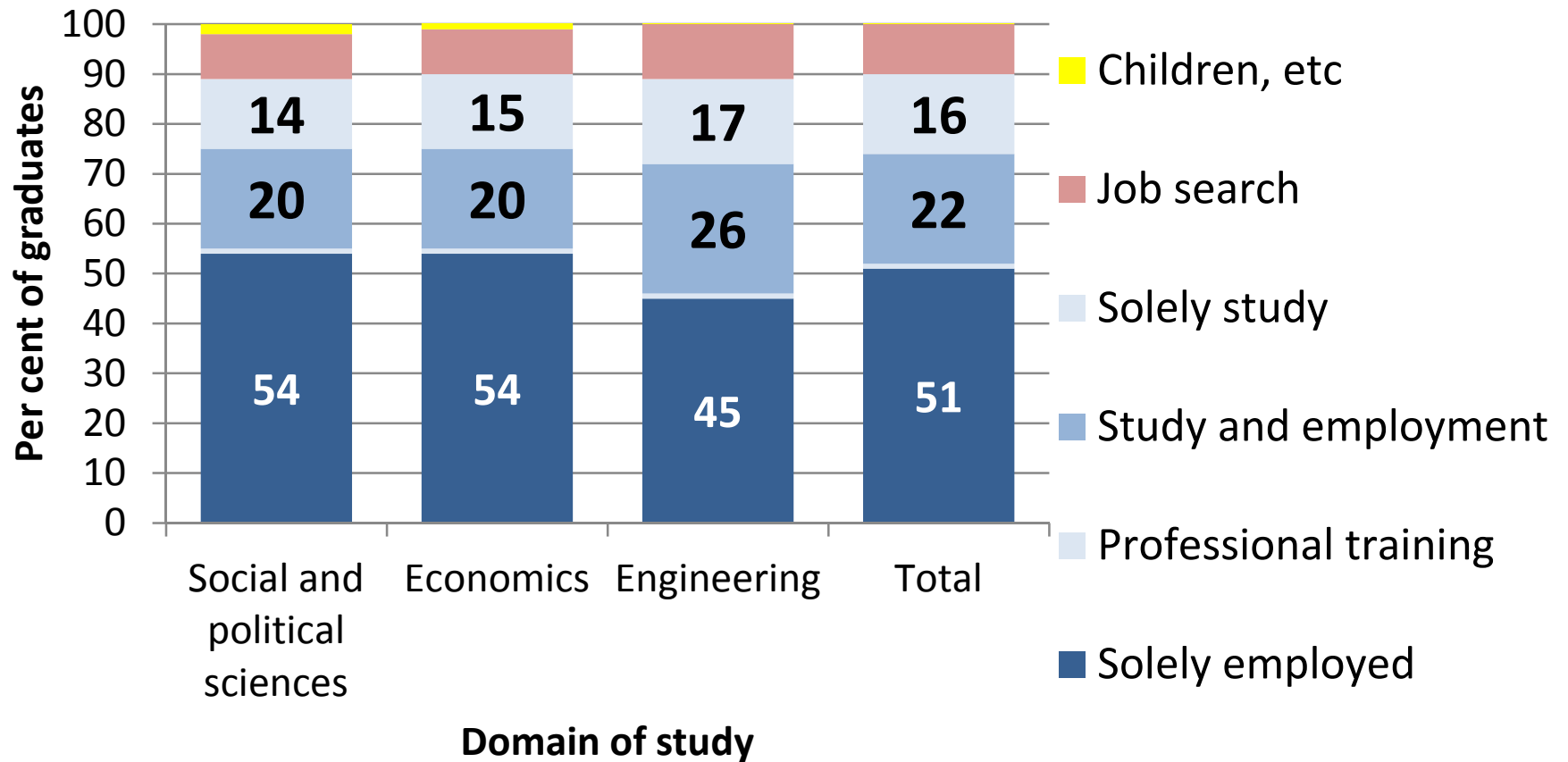
## Employment start

- Longer job search for 2009 graduates
- 2005 graduates are almost all employed
- 38 % of graduates studying

## Duration of job search after graduation 2005, 2009 (arithmetic mean)

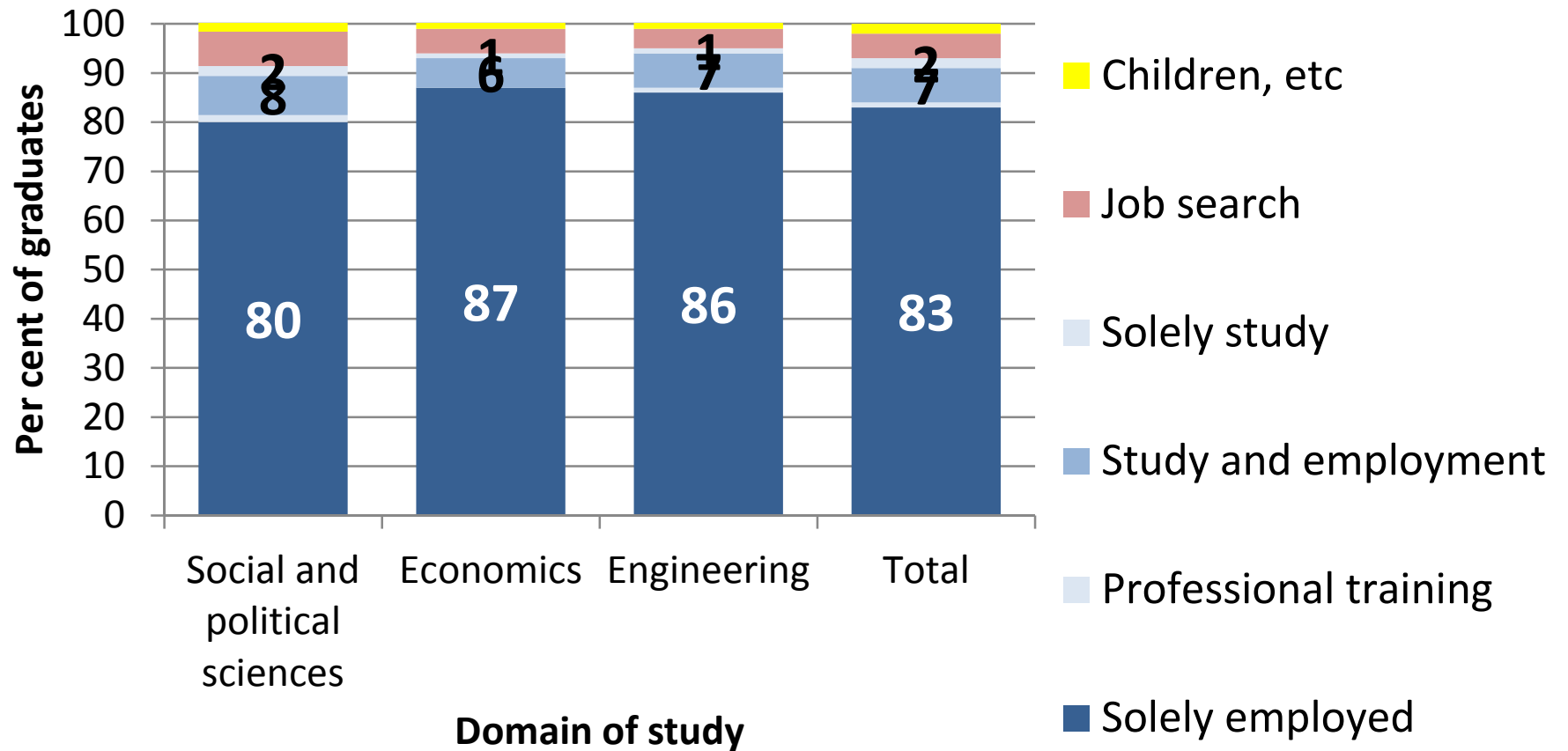


## Situation of 2009 graduates: 1,5 year after graduation



Source: UEFISCDI, National Study of Monitoring the Higher Education Graduates' Insertion into the Labor Market (NAMO)

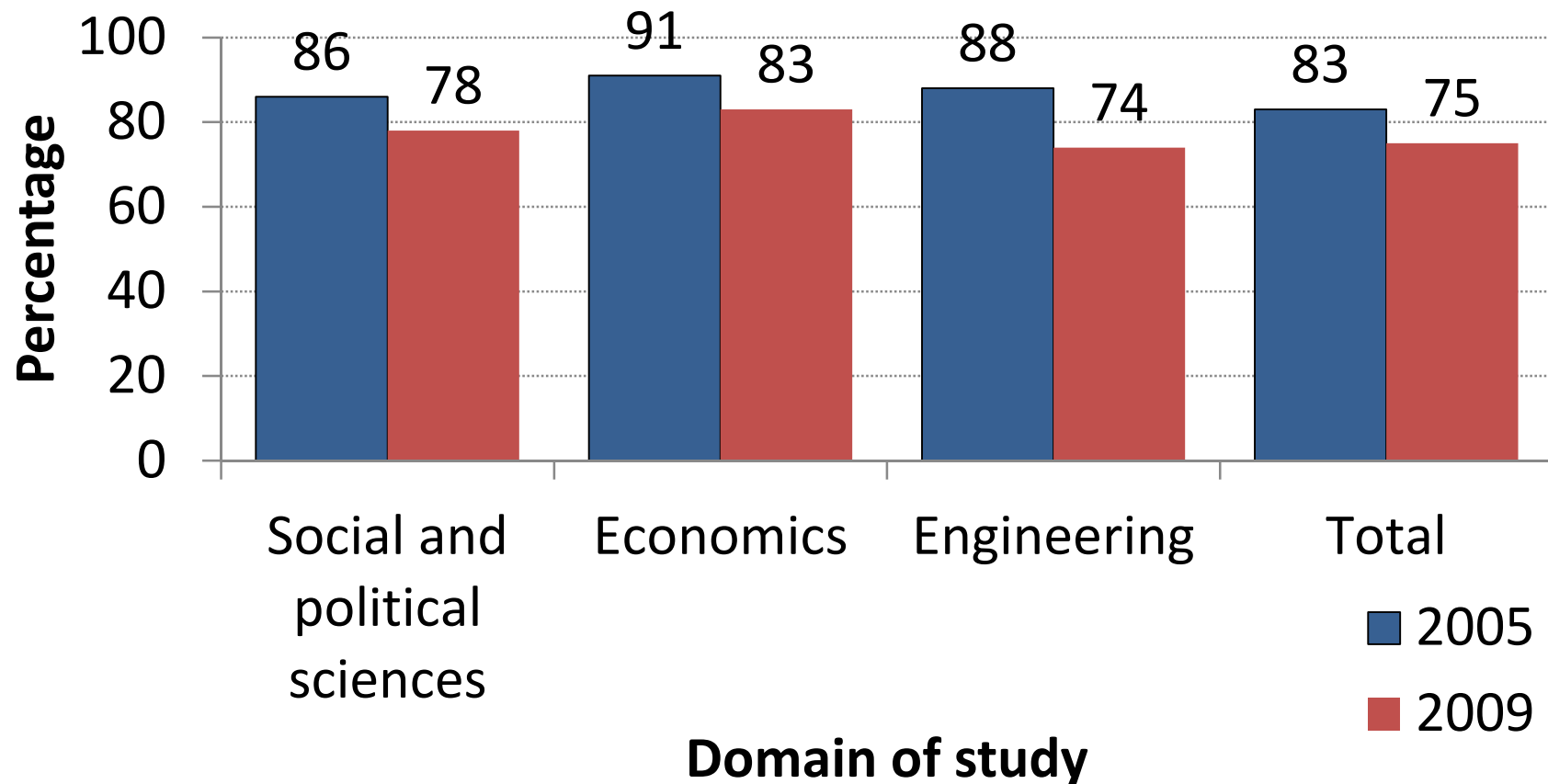
## Situation of 2005 graduates: 5,5 year after graduation



Source: UEFISCDI, National Study of Monitoring the Higher Education Graduates' Insertion into the Labor Market (NAMO)

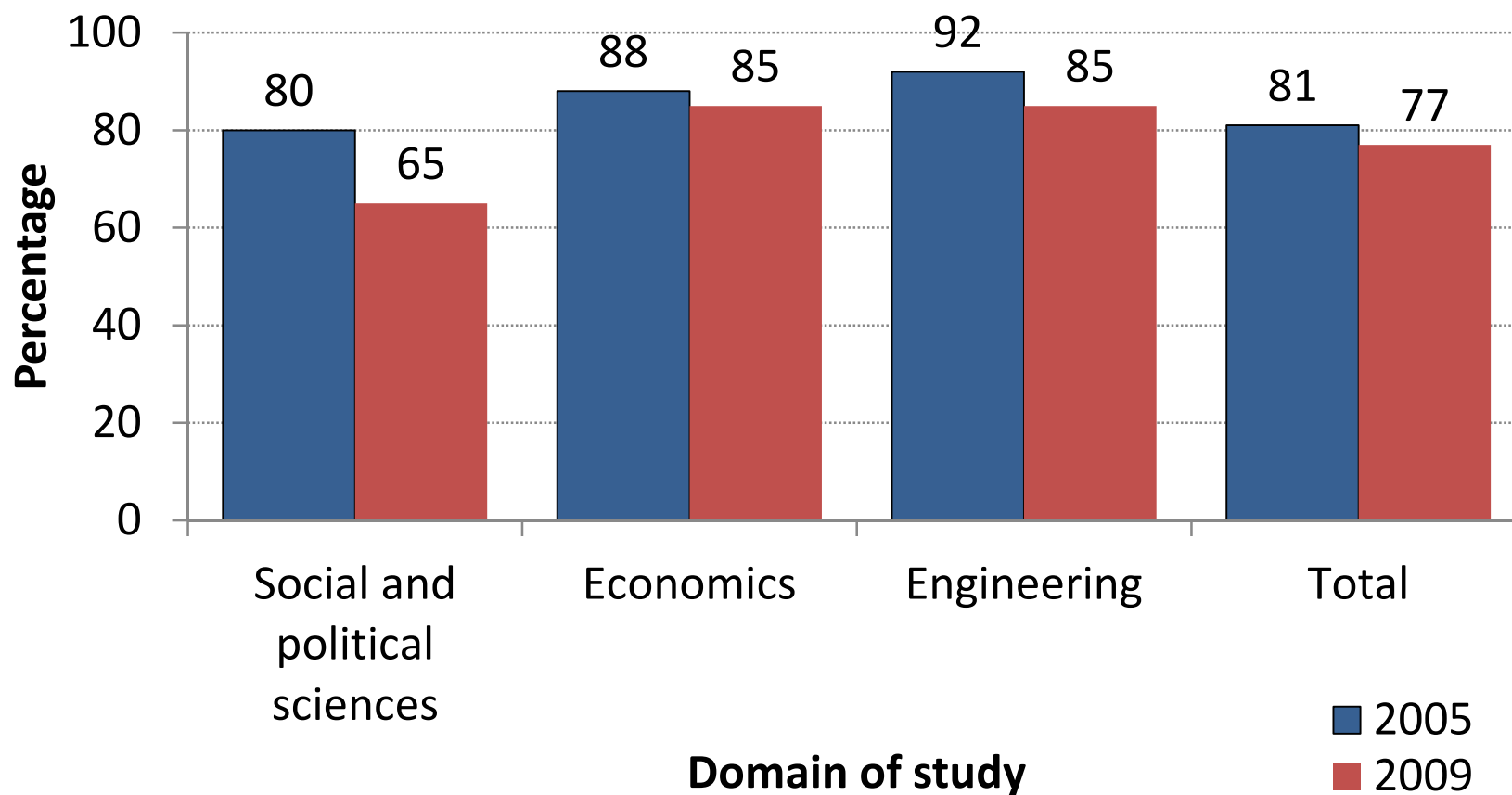


## Unlimited term contract (%; appr. 1,5 / 5,5 years after graduation)

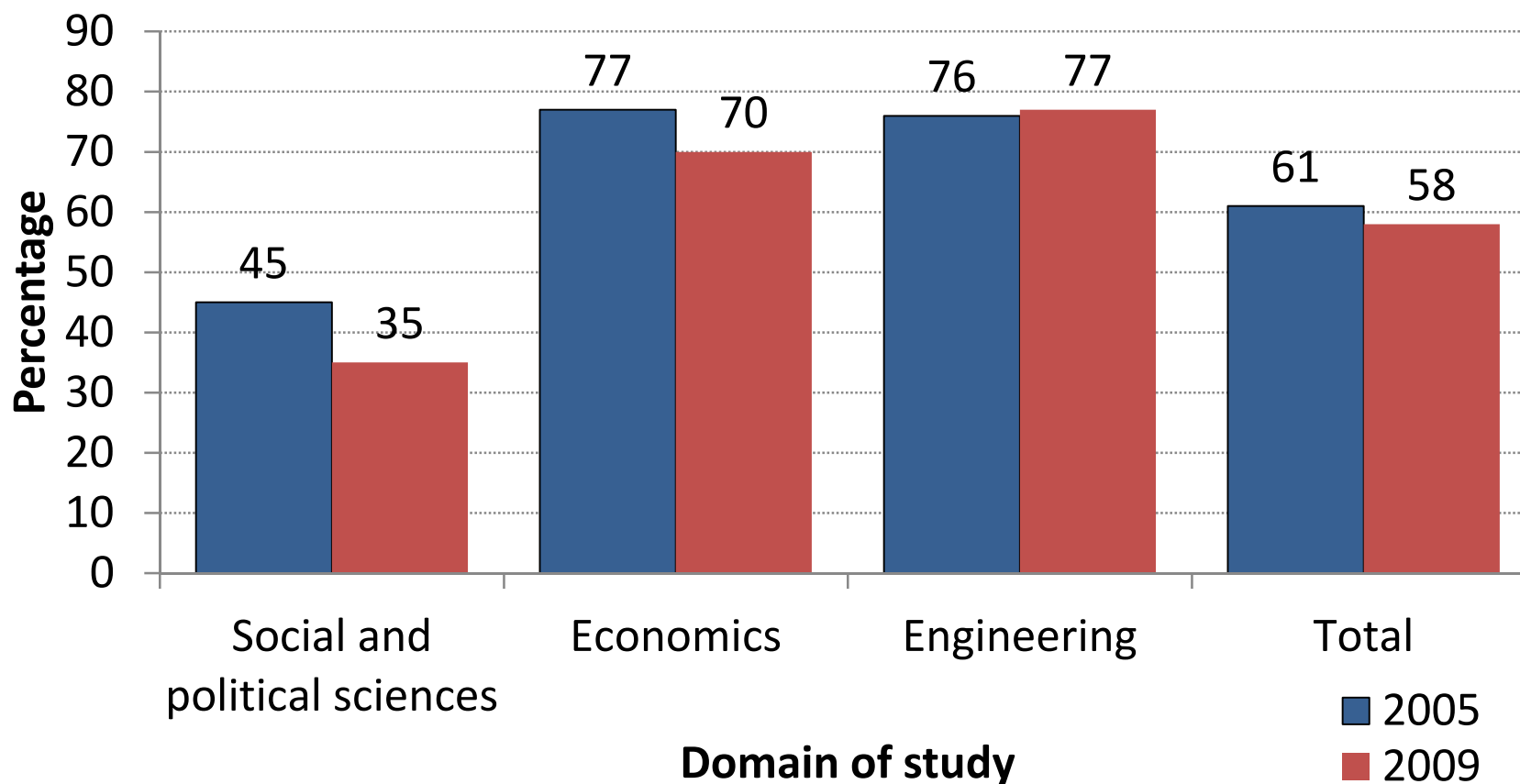


Source: UEFISCDI, National Study of Monitoring the Higher Education Graduates' Insertion into the Labor Market (NAMO)

## Full time employment (%)

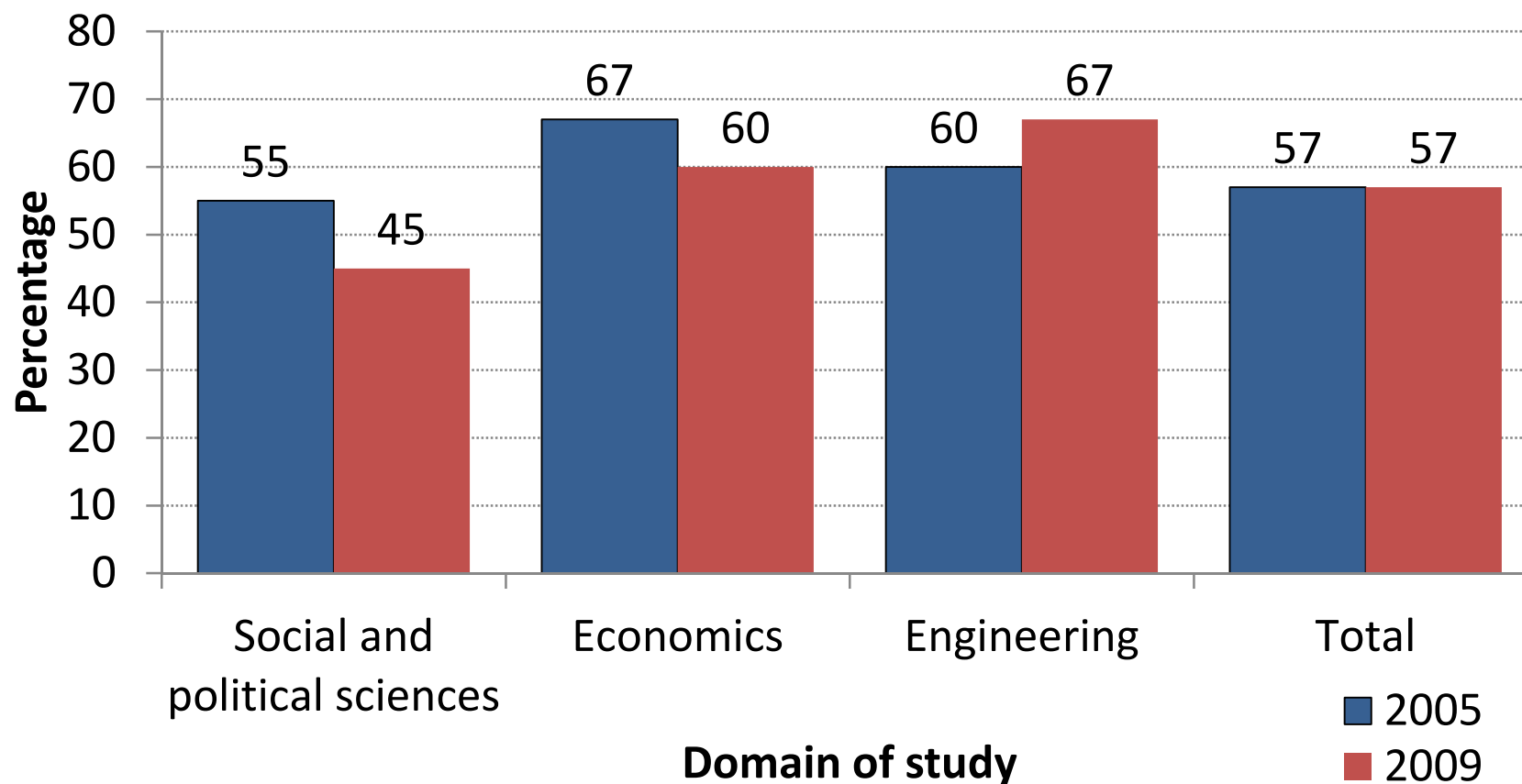


## Employment in private sector (including self-employment) (%)



Source: UEFISCDI, National Study of Monitoring the Higher Education Graduates' Insertion into the Labor Market (NAMO)

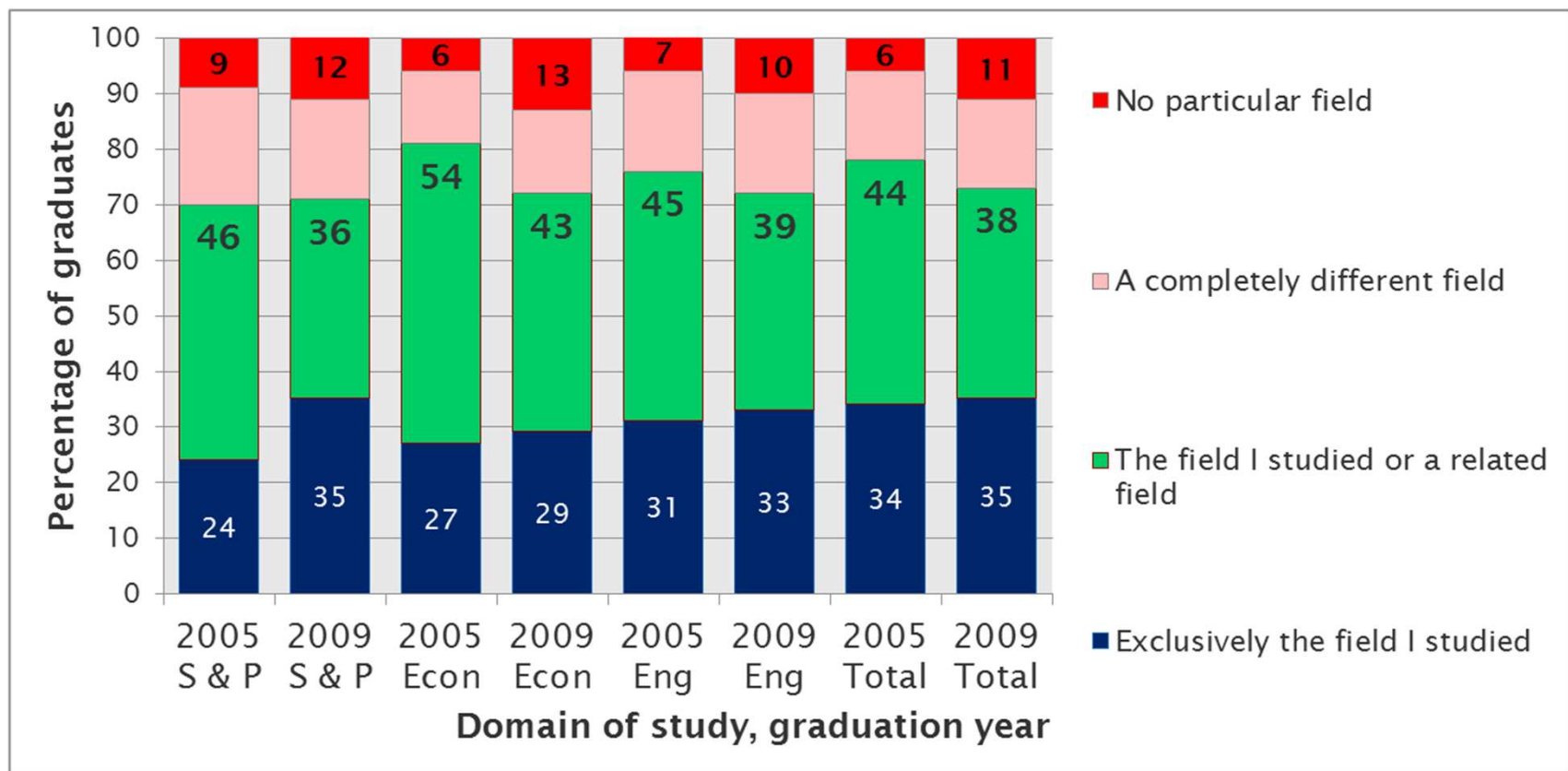
## Employment in same county (%)



Source: UEFISCDI, National Study of Monitoring the Higher Education Graduates' Insertion into the Labor Market (NAMO)

- Indicators for appropriate employment
  - Horizontal: Employment within an appropriate field
  - Vertical: Appropriate level of education of employment
- Clear increase of vertical match within years (but also because of further qualification)
- Smaller increase of horizontal match

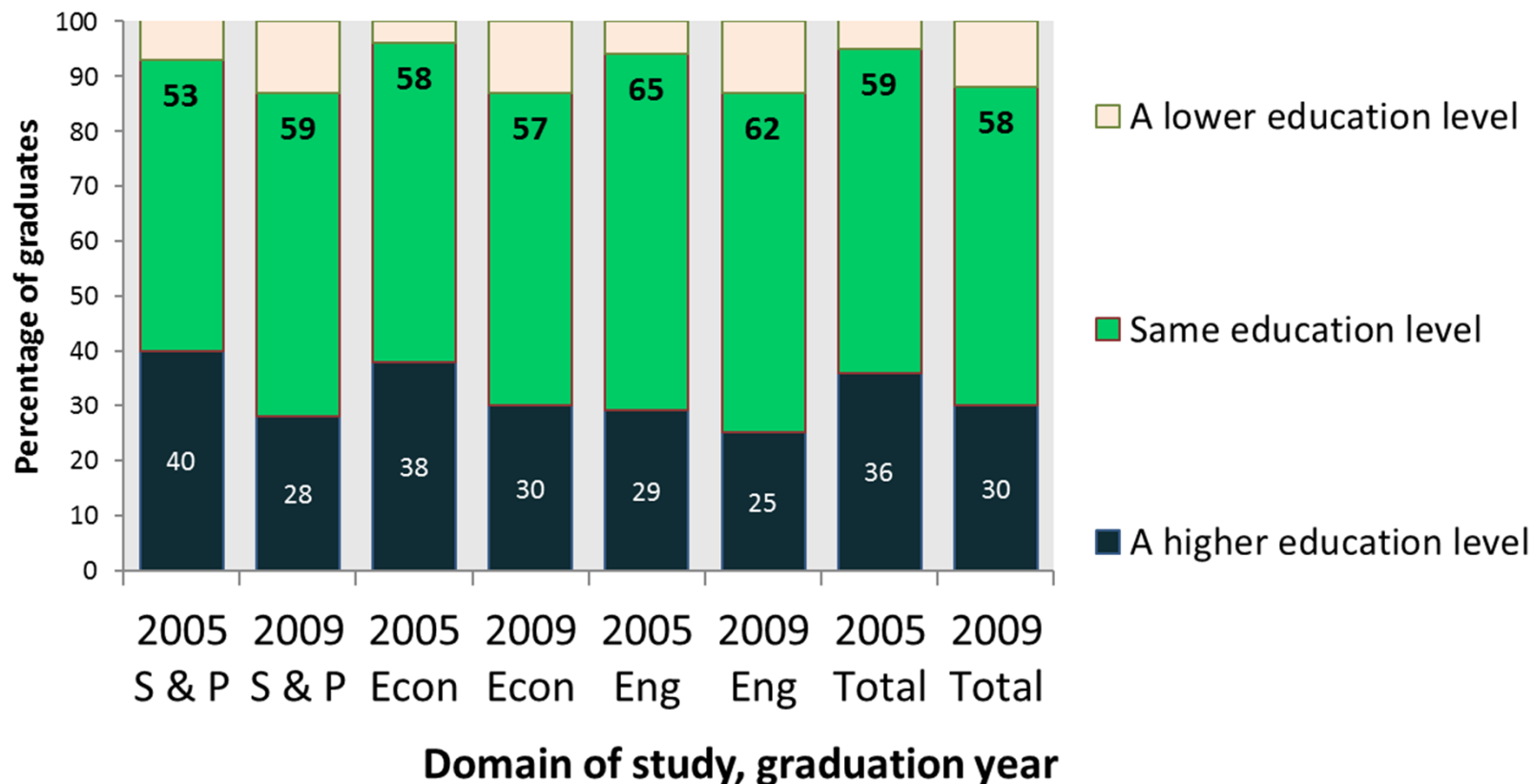
# Horizontal match – related field (%)



Question I14: What field of study do you feel is most appropriate for this work?

Source: UEFISCDI, National Study of Monitoring the Higher Education Graduates' Insertion into the Labor Market (NAMO)

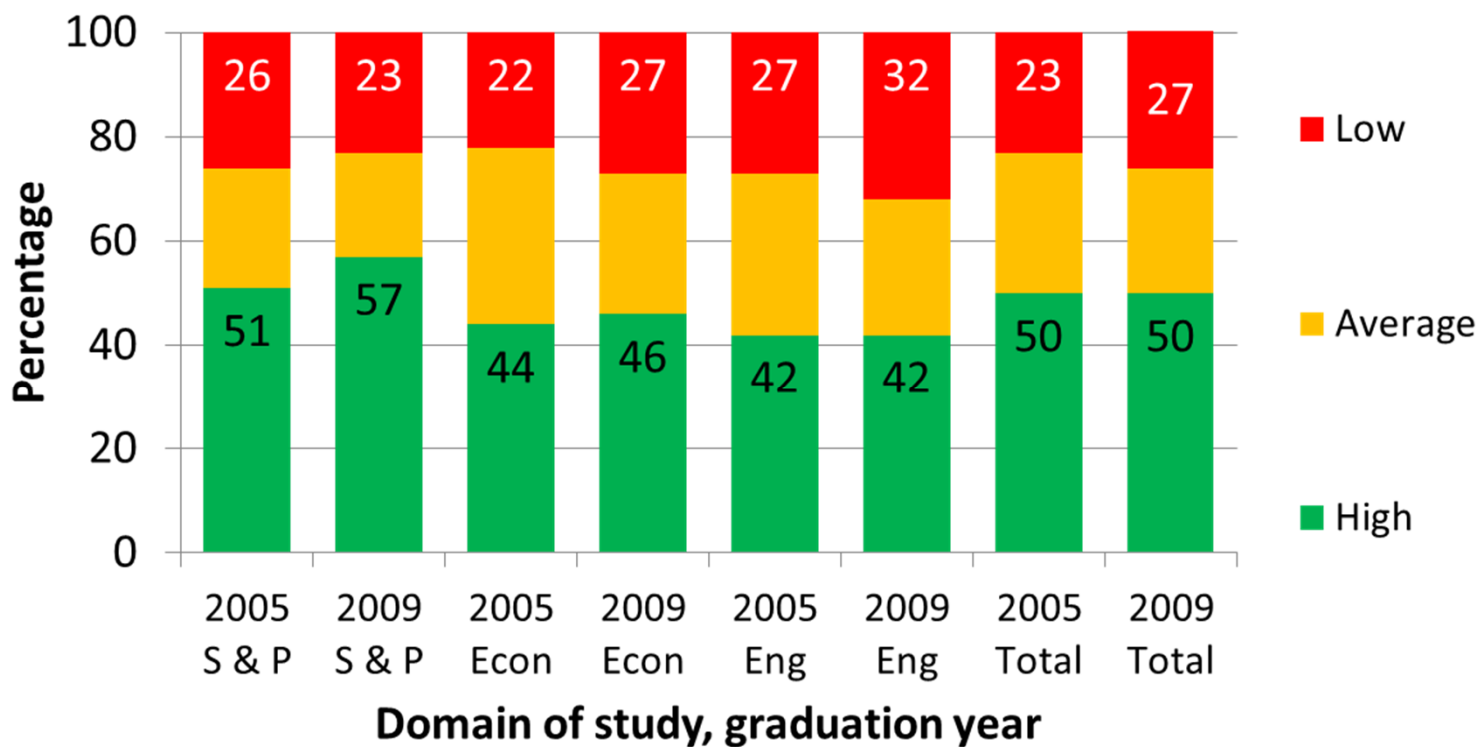
## Vertical match – Appropriate type of education (%)



Question I12: What type of education do you feel is most appropriate for this work?

Source: UEFISCDI, National Study of Monitoring the Higher Education Graduates' Insertion into the Labor Market (NAMO)

# Use of knowledge and skills in current employment (%)



Question I13: To what extent are your knowledge and skills acquired during study utilized in this work?

Source: UEFISCDI, National Study of Monitoring the Higher Education Graduates' Insertion into the Labor Market (NAMO)



## Problems for interpretation

- Graduation years difficult to compare (different composition, 2005 graduates have four more years to get properly employed)
- How representative are the respondents (universities left out, methods used, differences in response rate)